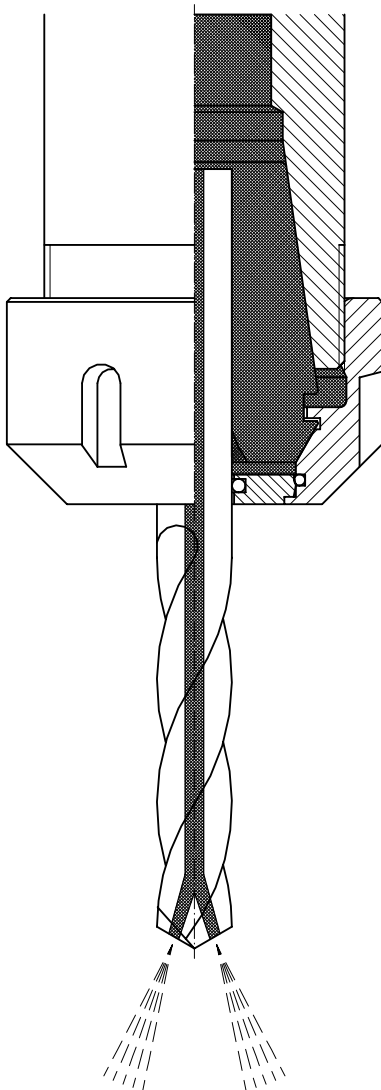


DS/ER

4

■ FEATURES AND BENEFITS



Quality: Swiss-made to ISO 9001; DIN 6499

⇒ Product consistency and worldwide acceptance

Innovative: Patented sealing disk system

⇒ 0.5 mm clamping range

Product Traceability: Lot number marked on disks

⇒ Quality control and accountability

High Pressure: ⇒ For applications up to 150 bar (2'000 psi)

Protection: Sealing disk built-in in front of collet

⇒ Protects against all kind of dirt and chips entering the slots of collet

Coolant Through Tools

⇒ Improved cooling and lubrication of cutting tools

⇒ Longer tool life

⇒ Improved chip removal

Marking: Type and size markings easy to read

⇒ Reduced disk selection errors

Compact Design: Short design

⇒ Very short extension of clamping nut

Wide Product Range: ⇒ To be used with all **REGO-FIX®** collets and tapping collets ER-GB together with 5 different types of clamping nuts

Interchangeable: ⇒ Easy changing of sealing disks according to required application

Sealing Range: ⇒ 0.5 mm per disk

Matched Tooling System for Best Fit:

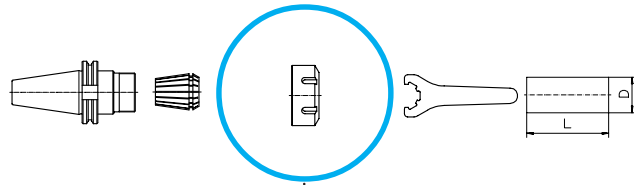
ER collet, toolholder, clamping nut, sealing disk and spanner all from **REGO-FIX®**

⇒ Whole system stands for highest precision and longest tool life

Maintenance: Standard size replaceable O-rings

⇒ Long tool life, replacement everywhere available

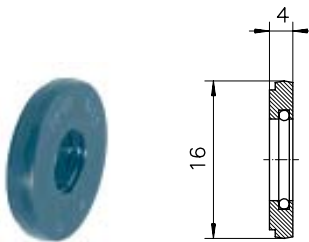
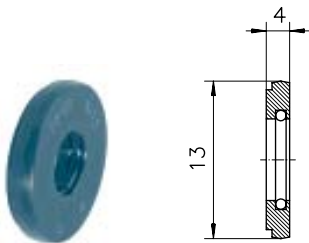
SEALING DISKS



DS/ER 16
DS/ER 20

4

MATCHING PRODUCTS



Clamping Nut	Part No.	Page	Standard	With Friction Bearing	Balanced	For Coolant Through Tools	Collet Locking System	Mini-Nut	Nut with External Thread	Counter Nut	Spanner	Part No.	Page	
	Hf-Q/ERC 16	3416.20000	4-6		▲	▲	▲					GS 25	7112.16000	12-1
	Hf-Q/ERBC 16	3416.40000	4-10	■	▲	▲	▲					GS 25	7112.16000	12-1
	Hf-Q/ERMC 16	3516.20000	4-14		▲	▲	▲	■				E 16 M	7113.16000	12-1
	Hf-Q/ERAXC 16	3316.70000	4-18		▲	▲	▲	■	■			E 16 AX	7117.16000	12-1

	Hf-Q/ERC 20	3420.20000	4-6		▲	▲	▲					GS 30	7112.20000	12-1
	Hf-Q/ERBC 20	3420.40000	4-10	■	▲	▲	▲					GS 30	7112.20000	12-1
	Hf-Q/ERMC 20	3520.20000	4-14		▲	▲	▲	■				E 20 M	7113.20000	12-1
	Hf-Q/ERAXC 20	3320.70000	4-18		▲	▲	▲	■	■			E 20 AX	7117.20000	12-1

SEALING DISK SETS DS/ER 16 AND DS/ER 20

Sealing Capacity [mm]	Set DS/ER 16 Part No.
	3916.00000
3.5 ... 10.0	Supplied with: 14 Sealing Disks 1 Wooden Tray
Wooden Tray DSR/16	

Sealing Capacity [mm]	Set DS/ER 20 Part No.
	3920.00000
3.5 ... 13.0	Supplied with: 20 Sealing Disks 1 Wooden Tray
Wooden Tray DSR/20	

DS/ER 16

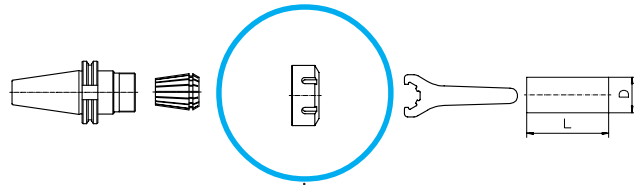
DS/ER 20

SEALING DISKS DS/ER 16 AND DS/ER 20

4

Sealing Capacity [mm]		Capacity [inch]	ø [inch]	DS/ER 16 Part No.	DS/ER 20 Part No.
3.00 ... 2.50	0.1181 ... 0.0984	3/32"	3916.00300	3920.00300	
3.50 ... 3.00	0.1378 ... 0.1181	1/8"	3916.00350	3920.00350	
4.00 ... 3.50	0.1575 ... 0.1378	5/32"	3916.00400	3920.00400	
4.50 ... 4.00	0.1772 ... 0.1575		3916.00450	3920.00450	
5.00 ... 4.50	0.1969 ... 0.1772	3/16"	3916.00500	3920.00500	
5.50 ... 5.00	0.2165 ... 0.1969	7/32"	3916.00550	3920.00550	
6.00 ... 5.50	0.2362 ... 0.2165		3916.00600	3920.00600	
6.50 ... 6.00	0.2559 ... 0.2362	1/4"	3916.00650	3920.00650	
7.00 ... 6.50	0.2756 ... 0.2559		3916.00700	3920.00700	
7.50 ... 7.00	0.2953 ... 0.2756	9/32"	3916.00750	3920.00750	
8.00 ... 7.50	0.3150 ... 0.2953	5/16"	3916.00800	3920.00800	
8.50 ... 8.00	0.3347 ... 0.3150		3916.00850	3920.00850	
9.00 ... 8.50	0.3543 ... 0.3347	11/32"	3916.00900	3920.00900	
9.50 ... 9.00	0.3740 ... 0.3543	3/8"	3916.00950	3920.00950	
10.00 ... 9.50	0.3937 ... 0.3740		3916.01000	3920.01000	
10.50 ... 10.00	0.4134 ... 0.3937	13/32"	-	3920.01050	
11.00 ... 10.50	0.4330 ... 0.4134		-	3920.01100	
11.50 ... 11.00	0.4528 ... 0.4330	7/16"	-	3920.01150	
12.00 ... 11.50	0.4724 ... 0.4528	15/32"	-	3920.01200	
12.50 ... 12.00	0.4921 ... 0.4724		-	3920.01250	
13.00 ... 12.50	0.5118 ... 0.4921	1/2"	-	3920.01300	
Wooden Tray DSR				7122.16000	7122.20000

SEALING DISKS

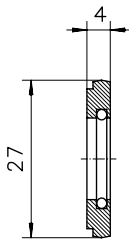
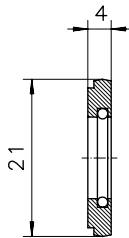


DS/ER 25

DS/ER 32

4

MATCHING PRODUCTS



Clamping Nut	Part No.	Page	Standard	With Friction Bearing	Balanced	For Coolant Through Tools	Collet Locking System	Mini-Nut	Nut with External Thread	CounterNut	Spanner	Part No.	Page	
	Hi-Q/ERC 25	3425.20000	4-6		▲	●	⊗					E 25	7111.25000	12-1
	Hi-Q/ERBC 25	3425.40000	4-10	■	▲	●	⊗					E 25	7111.25000	12-1
	Hi-Q/ERMC 25	3525.20000	4-14		▲	●	⊗	■				E 25 M	7113.25000	12-1
	Hi-Q/ERAXC 25	3325.70000	4-18		▲	●	⊗	■				E 25 AX	7117.25000	12-1

	Hi-Q/ERC 32	3432.20000	4-6		▲	●	⊗					E 32	7111.32000	12-1
	Hi-Q/ERBC 32	3432.40000	4-10	■	▲	●	⊗					E 32	7111.32000	12-1
	Hi-Q/ERAXC 32	3332.70000	4-18		▲	●	⊗	■				E 32 AX	7117.32000	12-1

SEALING DISK SETS DS/ER 25 AND DS/ER 32

Sealing Capacity [mm]	Set DS/ER 25 Part No.
	3925.00000
3.5 ... 16.0	Supplied with:
Wooden Tray DSR/25	26 Sealing Disks 1 Wooden Tray

Sealing Capacity [mm]	Set DS/ER 32 Part No.
	3932.00000
3.5 ... 20.0	Supplied with:
Wooden Tray DSR/32	34 Sealing Disks 1 Wooden Tray

DS/ER 25

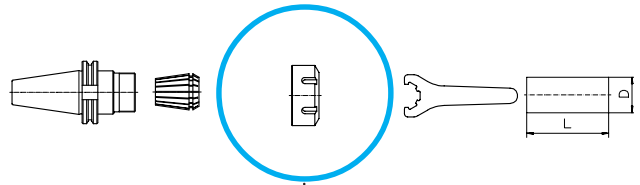
DS/ER 32

SEALING DISKS DS/ER 25 AND DS/ER 32

Sealing Capacity [mm]		Sealing Capacity [inch]		ø [inch]	DS/ER 25 Part No.	DS/ER 32 Part No.
3.00 ... 2.50	0.1181 ... 0.0984	3/32"			3925.00300	3932.00300
3.50 ... 3.00	0.1378 ... 0.1181	1/8"			3925.00350	3932.00350
4.00 ... 3.50	0.1575 ... 0.1378	5/32"			3925.00400	3932.00400
4.50 ... 4.00	0.1772 ... 0.1575				3925.00450	3932.00450
5.00 ... 4.50	0.1969 ... 0.1772	3/16"			3925.00500	3932.00500
5.50 ... 5.00	0.2165 ... 0.1969	7/32"			3925.00550	3932.00550
6.00 ... 5.50	0.2362 ... 0.2165				3925.00600	3932.00600
6.50 ... 6.00	0.2559 ... 0.2362	1/4"			3925.00650	3932.00650
7.00 ... 6.50	0.2756 ... 0.2559				3925.00700	3932.00700
7.50 ... 7.00	0.2953 ... 0.2756	9/32"			3925.00750	3932.00750
8.00 ... 7.50	0.3150 ... 0.2953	5/16"			3925.00800	3932.00800
8.50 ... 8.00	0.3347 ... 0.3150				3925.00850	3932.00850
9.00 ... 8.50	0.3543 ... 0.3347	11/32"			3925.00900	3932.00900
9.50 ... 9.00	0.3740 ... 0.3543	3/8"			3925.00950	3932.00950
10.00 ... 9.50	0.3937 ... 0.3740				3925.01000	3932.01000
10.50 ... 10.00	0.4134 ... 0.3937	13/32"			3925.01050	3932.01050
11.00 ... 10.50	0.4330 ... 0.4134				3925.01100	3932.01100
11.50 ... 11.00	0.4528 ... 0.4330	7/16"			3925.01150	3932.01150
12.00 ... 11.50	0.4724 ... 0.4528	15/32"			3925.01200	3932.01200

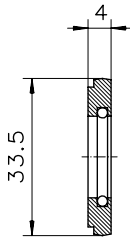
Sealing Capacity [mm]		Sealing Capacity [inch]		ø [inch]	DS/ER 25 Part No.	DS/ER 32 Part No.
12.50 ... 12.00	0.4921 ... 0.4724				3925.01250	3932.01250
13.00 ... 12.50	0.5118 ... 0.4921	1/2"			3925.01300	3932.01300
13.50 ... 13.00	0.5315 ... 0.5118	17/32"			3925.01350	3932.01350
14.00 ... 13.50	0.5512 ... 0.5315				3925.01400	3932.01400
14.50 ... 14.00	0.5709 ... 0.5512	9/16"			3925.01450	3932.01450
15.00 ... 14.50	0.5905 ... 0.5709				3925.01500	3932.01500
15.50 ... 15.00	0.6102 ... 0.5905	19/32"			3925.01550	3932.01550
16.00 ... 15.50	0.6300 ... 0.6102	5/8"			3925.01600	3932.01600
16.50 ... 16.00	0.6496 ... 0.6300				–	3932.01650
17.00 ... 16.50	0.6693 ... 0.6496	21/32"			–	3932.01700
17.50 ... 17.00	0.6890 ... 0.6693	11/16"			–	3932.01750
18.00 ... 17.50	0.7087 ... 0.6890				–	3932.01800
18.50 ... 18.00	0.7284 ... 0.7087	23/32"			–	3932.01850
19.00 ... 18.50	0.7480 ... 0.7284	3/4"			–	3932.01900
19.50 ... 19.00	0.7677 ... 0.7480				–	3932.01950
20.00 ... 19.50	0.7874 ... 0.7677	25/32"			–	3932.02000
Wooden Tray DSR					7122.25000	7122.32000

SEALING DISKS



DS/ER 40

4



MATCHING PRODUCTS

Clamping Nut	Part No.	Page	Standard	With Friction Bearing	Balanced	For Coolant Through Tools	Collet Locking System	Mini-Nut	Nut with External Thread	Counter Nut	Spanner	Part No.	Page	
	Hi-Q/ERC 40	3440.20000	4-6		▲	●	🔒					E 40	7111.40000	12-1
	Hi-Q/ERBC 40	3440.40000	4-10	■	▲	●	🔒					E 40	7111.40000	12-1
	Hi-Q/ERAXC 40	3340.70000	4-18		▲	●	🔒	■				E 40 AX	7117.40000	12-1

SEALING DISKS SET DS/ER 40

Sealing Capacity [mm]	Set ER 40 Part No.
	3940.00000
3.5 ... 26.0	Supplied with: 46 Sealing Disks 1 Wooden Tray
Wooden Tray DSR/40	

DS/ER 40

SEALING DISKS DS/ER 40

Sealing Capacity [mm]	Sealing Capacity [inch]	ø [inch]	DS/ER 40 Part No.
3.00 ... 2.50	0.1181 ... 0.0984	3/32"	3940.00300
3.50 ... 3.00	0.1378 ... 0.1181	1/8"	3940.00350
4.00 ... 3.50	0.1575 ... 0.1378	5/32"	3940.00400
4.50 ... 4.00	0.1772 ... 0.1575		3940.00450
5.00 ... 4.50	0.1969 ... 0.1772	3/16"	3940.00500
5.50 ... 5.00	0.2165 ... 0.1969	7/32"	3940.00550
6.00 ... 5.50	0.2362 ... 0.2165		3940.00600
6.50 ... 6.00	0.2559 ... 0.2362	1/4"	3940.00650
7.00 ... 6.50	0.2756 ... 0.2559		3940.00700
7.50 ... 7.00	0.2953 ... 0.2756	9/32"	3940.00750
8.00 ... 7.50	0.3150 ... 0.2953	5/16"	3940.00800
8.50 ... 8.00	0.3347 ... 0.3150		3940.00850
9.00 ... 8.50	0.3543 ... 0.3347	11/32"	3940.00900
9.50 ... 9.00	0.3740 ... 0.3543	3/8"	3940.00950
10.00 ... 9.50	0.3937 ... 0.3740		3940.01000
10.50 ... 10.00	0.4134 ... 0.3937	13/32"	3940.01050
11.00 ... 10.50	0.4330 ... 0.4134		3940.01100
11.50 ... 11.00	0.4528 ... 0.4330	7/16"	3940.01150
12.00 ... 11.50	0.4724 ... 0.4528	15/32"	3940.01200
12.50 ... 12.00	0.4921 ... 0.4724		3940.01250
13.00 ... 12.50	0.5118 ... 0.4921	1/2"	3940.01300
13.50 ... 13.00	0.5315 ... 0.5118	17/32"	3940.01350
14.00 ... 13.50	0.5512 ... 0.5315		3940.01400
14.50 ... 14.00	0.5709 ... 0.5512	9/16"	3940.01450

Sealing Capacity [mm]	Sealing Capacity [inch]	ø [inch]	DS/ER 40 Part No.
15.00 ... 14.50	0.5905 ... 0.5709		3940.01500
15.50 ... 15.00	0.6102 ... 0.5905	19/32"	3940.01550
16.00 ... 15.50	0.6300 ... 0.6102	5/8"	3940.01600
16.50 ... 16.00	0.6496 ... 0.6300		3940.01650
17.00 ... 16.50	0.6693 ... 0.6496	21/32"	3940.01700
17.50 ... 17.00	0.6890 ... 0.6693	11/16"	3940.01750
18.00 ... 17.50	0.7087 ... 0.6890		3940.01800
18.50 ... 18.00	0.7283 ... 0.7087	23/32"	3940.01850
19.00 ... 18.50	0.7480 ... 0.7283	3/4"	3940.01900
19.50 ... 19.00	0.7677 ... 0.7480		3940.01950
20.00 ... 19.50	0.7874 ... 0.7677	25/32"	3940.02000
20.50 ... 20.00	0.8071 ... 0.7874		3940.02050
21.00 ... 20.50	0.8268 ... 0.8071	13/16"	3940.02100
21.50 ... 21.00	0.8465 ... 0.7874	27/32"	3940.02150
22.00 ... 21.50	0.8661 ... 0.8465		3940.02200
22.50 ... 21.00	0.8858 ... 0.8661	7/8"	3940.02250
23.00 ... 22.50	0.9055 ... 0.8858	29/32"	3940.02300
23.50 ... 23.00	0.9252 ... 0.9055		3940.02350
24.00 ... 23.50	0.9449 ... 0.9252	15/16"	3940.02400
24.50 ... 24.00	0.9646 ... 0.9449		3940.02450
25.00 ... 24.50	0.9843 ... 0.9646	31/32"	3940.02500
25.50 ... 25.00	1.0039 ... 0.9843	1"	3940.02550
26.00 ... 25.50	1.0236 ... 1.0039		3940.02600
Wooden Tray			7122.40000