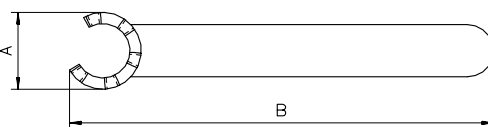
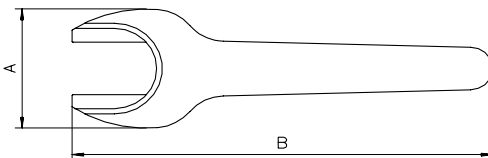
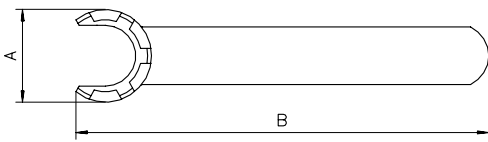
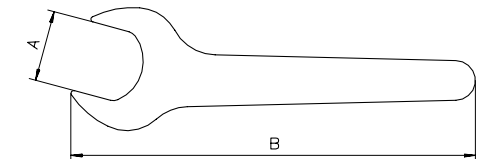
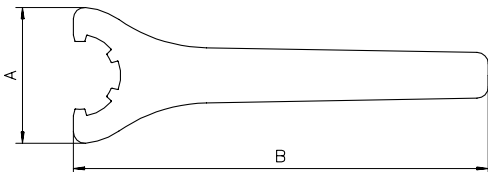


# SPANNERS



■ SPANNERS



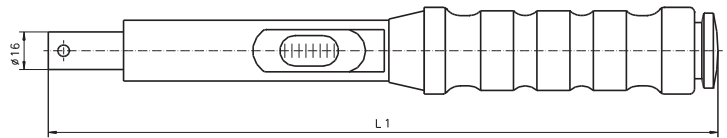
Spanners	Part No.	Size	A [mm]	B [mm]	For Hi-Q/ER	For Hi-Q/ERC	For Hi-Q/ERB	For Hi-Q/ERBC	For Hi-Q/ERM	For Hi-Q/ERMC	For ER MS	For Hi-Q/ER AX	For Hi-Q/ER AXC	For CM/ER
<b>TYPE E</b>														
E 16	7111.16000	ER 16	50.0	160										✓
E 20	7111.20000	ER 20	55.0	180										✓
E 25	7111.25000	ER 25	65.0	210	✓	✓	✓	✓						✓
E 32	7111.32000	ER 32	75.0	250	✓	✓	✓	✓						✓
E 40	7111.40000	ER 40	90.0	290	✓	✓	✓	✓						✓
E 50	7111.50000	ER 50	110.0	350	✓	✓								✓
<b>TYPE GS</b>														
GS 17	7112.11000	ER 11	17.0	95	✓	✓								
GS 25	7112.16000	ER 16	25.0	144	✓	✓	✓	✓						
GS 30	7112.20000	ER 20	30.0	172	✓	✓	✓	✓						
<b>TYPE EM</b>														
E 8 M	7113.08000	ER 8	12.4	74					✓					
E 11 M	7113.11000	ER 11	16.8	95					✓	✓				
E 16 M	7113.16000	ER 16	22.5	117					✓	✓				
E 20 M	7113.20000	ER 20	29.0	129					✓	✓				
E 25 M	7113.25000	ER 25	36.0	141					✓	✓				
<b>TYPE EMS</b>														
E 8 MS	7114.08000	ER 8	19.2	76							✓			
E 11 MS	7114.11000	ER 11	22.0	100							✓			
E 16 MS	7114.16000	ER 16	33.0	130							✓			
E 20 MS	7114.20000	ER 20	42.0	140							✓			
<b>TYPE EAX</b>														
E 11 AX	7117.11000	ER 11	16.5	108								✓		
E 16 AX	7117.16000	ER 16	22.5	131								✓	✓	
E 20 AX	7117.20000	ER 20	26.0	148								✓	✓	
E 25 AX	7117.25000	ER 25	29.5	162								✓	✓	
E 32 AX	7117.32000	ER 32	37.5	196								✓	✓	
E 40 AX	7117.40000	ER 40	47.5	220								✓	✓	



# TORQUE WRENCHES AND WRENCH HEADS

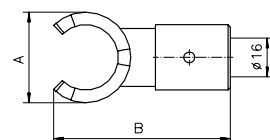
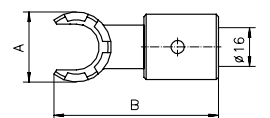
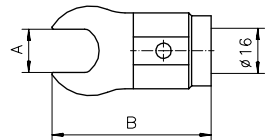
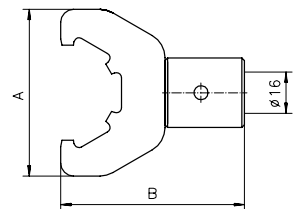
## TORQUE WRENCHES

Type	Part No.	Range		L1
		[Nm]	[ft.lbs]	[mm]
TORCO-FIX I	7150.05050	5 ... 50	5 ... 37.5	335
TORCO-FIX II	7150.20200	20 ... 200	20 ... 150	465
TORCO-FIX III	7150.60300	60 ... 300	50 ... 220	565



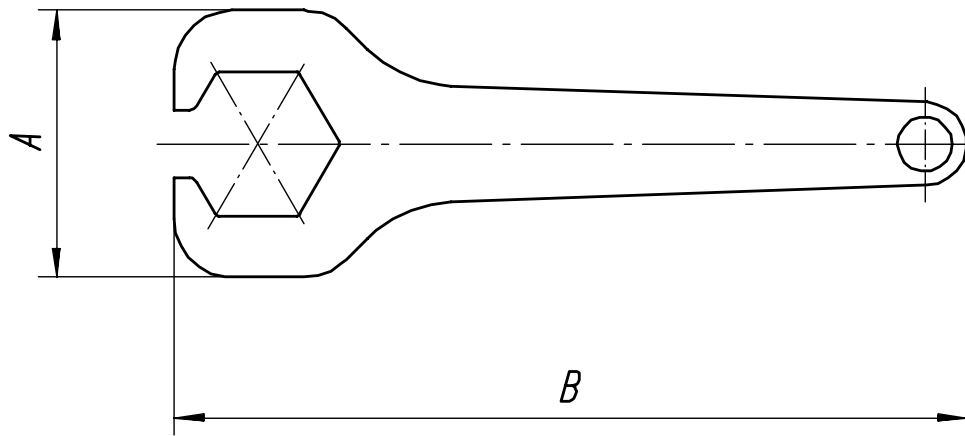
## MATCHING WRENCH HEADS

Wrench Heads	Part No.	Size	A [mm]	B [mm]	For Hi-Q/ER	For Hi-Q/ERC	For Hi-Q/ERB	For Hi-Q/ERBC	For Hi-Q/ERM	For Hi-Q/ERMC	For Hi-Q ER/AX	For Hi-Q ER/AXC	For CM/ER	For TORCO-FIX I	For TORCO-FIX II	For TORCO-FIX III
<b>TYPE A-E</b>																
A-E 16	7151.16000	ER 16	50.0	62.0									✓	✓		
A-E 20	7151.20000	ER 20	55.0	62.0									✓	✓		
A-E 25	7151.25000	ER 25	65.0	72.0	✓	✓	✓	✓					✓	✓	✓	
A-E 32	7151.32000	ER 32	75.0	72.0	✓	✓	✓	✓					✓	✓	✓	
A-E 40	7151.40000	ER 40	90.0	82.0	✓	✓	✓	✓					✓			✓
A-E 50	7151.50000	ER 50	110.0	94.0	✓		✓	✓								✓
<b>TYPE A-GS</b>																
A-GS 17	7152.11000	ER 11	17.0	60.0	✓	✓								✓		
A-GS 25	7152.16250	ER 16	25.0	63.5	✓	✓	✓	✓				✓			✓	
A-GS 30	7152.20000	ER 20	30.0	65.5	✓	✓	✓	✓							✓	
<b>TYPE A-EM</b>																
A-E 8 M	7153.08000	ER 8	12.4	53.0					✓					✓		
A-E 11 M	7153.11000	ER 11	16.8	54.0					✓	✓				✓		
A-E 16 M	7153.16000	ER 16	22.5	56.0					✓	✓				✓	✓	
A-E 20 M	7153.20000	ER 20	29.0	68.0					✓	✓				✓	✓	
A-E 25 M	7153.25000	ER 25	36.0	70.0					✓	✓				✓	✓	
<b>TYPE A-EAX</b>																
A-E11 AX	7157.11000	ER 11	16.5	56.0						✓				✓		
A-E16 AX	7157.16000	ER 16	22.5	58.0						✓	✓			✓	✓	
A-E20 AX	7157.20000	ER 20	26.0	59.0						✓	✓			✓		
A-E25 AX	7157.25000	ER 25	29.5	70.0						✓	✓			✓		
A-E32 AX	7157.32000	ER 32	37.5	73.0						✓	✓			✓	✓	
A-E40 AX	7157.40000	ER 40	47.5	77.0						✓	✓			✓	✓	



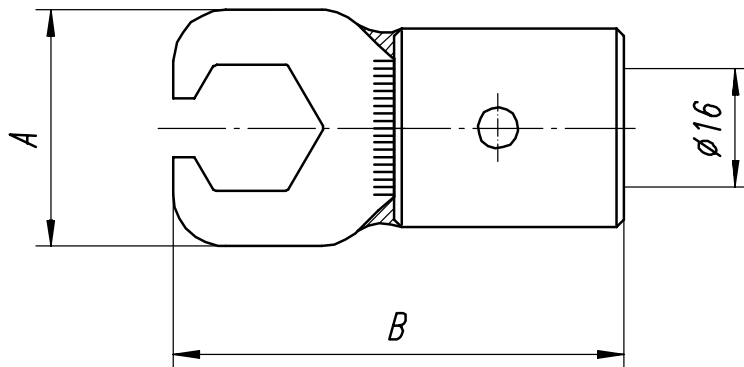
## SPANNERS & WRENCH HEADS

### TYPE EP



Spanners	Part No.	Size	A (mm)	B (mm)
E11P	7112.11010	ER11	32	95
E16P	7112.16010	ER16	44	145
E20P	7112.20010	ER20	52	170

### TYPE A-EP



Wrench Heads	Part No.	Size	A (mm)	B (mm)
A-E11P	7152.11010	ER11	32	61
A-E16P	7152.16010	ER16	44	71
A-E20P	7152.20010	ER20	52	81