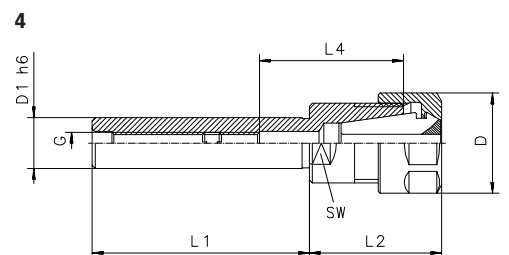
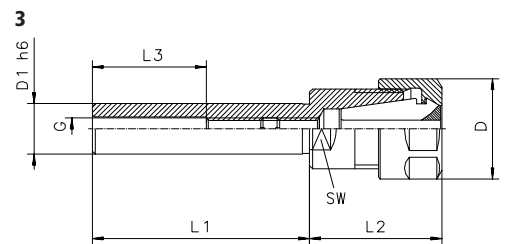
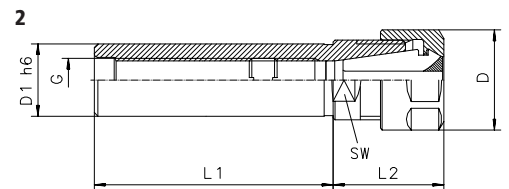
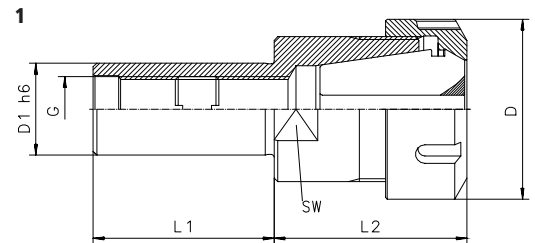




CYL/ER

COLLETHOLDERS

Type	Part No.	D [mm]	D1 h6 [mm]	G	L1 [mm]	L2 [mm]	L3 [mm]	L4 [mm]	SW [mm]	Drawing
CYL 1/2" x 070/ER 11	2613.11141	19	12.7	M6	70	28.5	48	-	12	3
CYL 1/2" x 100/ER 16	2613.11661	28	12.7	M6	100	36.0	74	-	19	3
CYL 1/2" x 100/ER 20	2613.12061	34	12.7	M6	100	44.5	78	-	22	3
CYL 14 x 060/ER 16	2614.11630	28	14	M6	60	36.5	-	40	19	4
CYL 16 x 060/ER 16	2616.11630	28	16	M 8x1	60	36.5	-	40	19	4
CYL 5/8" x 060/ER 16	2616.11631	28	15.875	M 8x1	60	36.5	-	-	19	1
CYL 5/8" x 100/ER 20	2616.12061	34	15.875	M 8x1	100	44.5	70	-	22	3
CYL 3/4" x 050/ER 16	2619.11621	28	19.05	M12x1	50	30.5	-	-	19	2
CYL 3/4" x 100/ER 16	2619.11661	28	19.05	M12x1	100	30.5	-	-	19	2
CYL 3/4" x 060/ER 20	2619.12031	34	19.05	M12x1	60	36.5	-	-	22	1
CYL 3/4" x 050/ER 25	2619.12521	42	19.05	M12x1	50	47.0	-	-	27	1
CYL 20 x 050/ER 16	2620.11620	28	20	M12x1	50	30.5	-	-	19	2
CYL 20 x 100/ER 16	2620.11660	28	20	M12x1	100	30.5	-	-	19	2
CYL 20 x 030/ER 20	2620.12010	34	20	M12x1	30	36.5	-	-	22	1
CYL 20 x 060/ER 20	2620.12030	34	20	M12x1	60	36.5	-	-	22	1
CYL 20 x 050/ER 25	2620.12520	42	20	M12x1	50	47.0	-	-	27	1
CYL 20 x 100/ER 25	2620.12560	42	20	M12x1	100	47.0	-	-	27	1
CYL 20 x 050/ER 32	2620.13220	50	20	M12x1	50	54.0	-	-	36	1
CYL 20 x 100/ER 32	2620.13260	50	20	M12x1	100	54.0	-	-	36	1
CYL 1"x 100/ER 20	2625.12061	34	25.40	M14x1	100	39.5	-	-	22	2
CYL 1"x 050/ER 25	2625.12521	42	25.40	M18x1.5	50	47.0	-	-	27	1
CYL 1"x 100/ER 25	2625.12561	42	25.40	M18x1.5	100	47.0	-	-	27	1
CYL 1"x 050/ER 32	2625.13221	50	25.40	M18x1.5	50	53.0	-	-	36	1
CYL 1"x 050/ER 40	2625.14021	63	25.40	M18x1.5	50	60.0	-	-	45	1
CYL 25 x 050/ER 25	2625.12520	42	25	M18x1.5	50	47.0	-	-	27	1
CYL 25 x 100/ER 25	2625.12560	42	25	M18x1.5	100	47.0	-	-	27	1
CYL 25 x 050/ER 32	2625.13220	50	25	M18x1.5	50	54.0	-	-	36	1
CYL 25 x 050/ER 40	2625.14020	63	25	M18x1.5	50	60.0	-	-	45	1
CYL 30 x 050/ER 25	2630.12520	42	30	M18x1.5	50	42.0	-	-	27	1
CYL 30 x 050/ER 32	2630.13220	50	30	M22x1.5	50	53.0	-	-	36	1
CYL 1 1/4"x 060/ER 32	2632.13231	50	31.75	M22x1.5	60	53.0	-	-	36	1



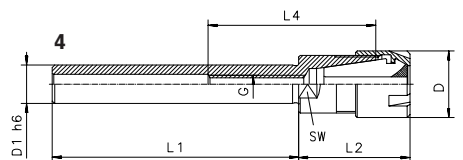
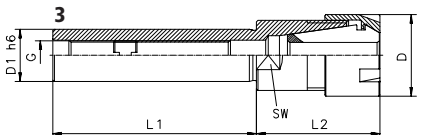
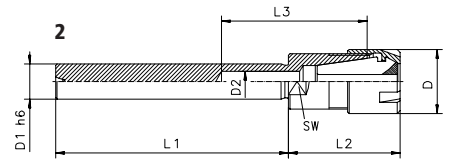
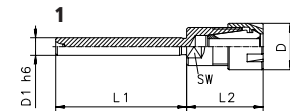


CYL/ER M

COLLETHOLDERS

Type	Part No.	D [mm]	D1 h6 [mm]	D2 [mm]	G	SW [mm]	L1 [mm]	L2 [mm]	L3 [mm]	L4 [mm]	For Manurhin	For Tornos-Bechler	Drawing
CYL 06 x 045/ER 11 M	2606.21120	16	6	-	-	11	45	26.5	-	-			1
CYL 07 x 045/ER 11 M	2607.21120	16	7	-	-	11	45	26.5	-	-			1
CYL 08 x 080/ER 8 M	2608.20850	12	8	3	-	8	80	26.0	30	-			2
CYL 08 x 056/ER 11 M	2608.21130	16	8	4	-	11	56	26.5	46	-	✓		2
CYL 3/8" x 070/ER 8 M	2609.20841	12	9.52	-	M 5	8	70	23.0	-	-			3
CYL 10 x 060/ER 16 M	2610.21630	22	10	5.2	-	17	60	38.5	50	-			2
CYL 12 x 080/ER 8 M	2612.20850	12	12	5.2	-	10	80	17.0	30	-			2
CYL 12 x 080/ER 16 M	2612.21650	22	12	7	-	17	80	38.5	50	-			2
CYL 1/2" x 140/ER 11 M	2613.21191	16	12.7	-	M 6	11	140	29.5	-	52			4
CYL 1/2" x 140/ER 16 M	2613.21691	22	12.7	-	M 6	17	140	37.0	-	50			4
CYL 15 x 100/ER 20 M	2615.22060	28	15	8.5	-	22	100	42.5	60	-			2
CYL 16 x 150/ER 11 M	2616.21190	16	16	-	M 8x1	14	150	21.0	-	-			3
CYL 16 x 100/ER 20 M	2616.22060	28	16	8.5	-	22	100	42.5	60	-			2
CYL 5/8" x 150/ER 11 M	2616.21191	16	15.87	-	M 8x1	14	150	22.5	-	-			3
CYL 3/4" x 155/ER 16 M	2619.21691	22	19.05	-	M12x1	17	155	26.5	-	-			3
CYL 3/4" x 100/ER 25 M	2619.22561	35	19.05	-	M12x1	27	100	47.0	-	-			3
CYL 20 x 155/ER 16 M	2620.21690	22	20	-	M12x1	17	155	26.5	-	-	✓		3
CYL 25 x 155/ER 20 M	2625.22090	28	25	-	M14x1	22	155	26.5	-	-	✓		3
CYL 1" x 155/ER 20 M	2625.22091	28	25.5	-	M14x1	22	155	26.5	-	-	✓		3

Supplied with: Colletholder, clamping nut and back-up screw
(Back-up screw only with type according to drawing No. 3 and 4)

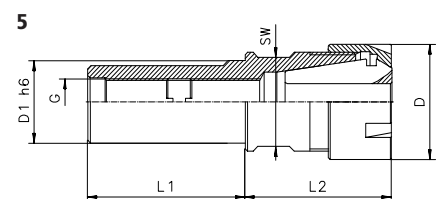
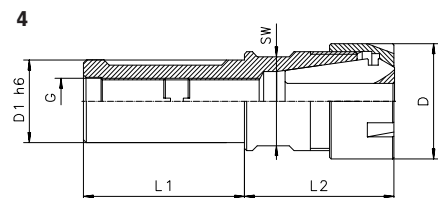
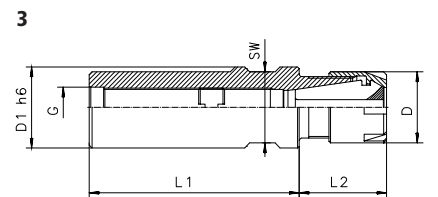
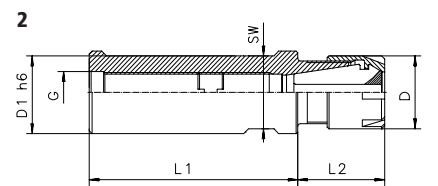
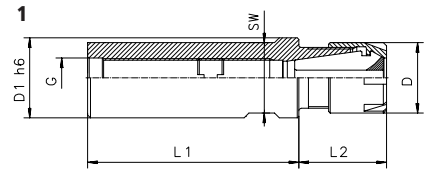




CYL/ER MF

COLLETHOLDERS

Type	Part No.	D [mm]	D1 h6 [mm]	G [mm]	L1 [mm]	L2 [mm]	SW [mm]	For Citizen	For Manurhin	For Schütte	For Star	For Tornos-Bechler	Drawing
CYL 5/8" x 043/ER 8 MF	2616.20811	12	15.875	M5	43	15	14	✓					1
CYL 16 x 038/ER 11 MF	2616.21112	16	16	M 8x1	38	20	14				✓		2
CYL 16 x 140/ER 11 MF	2616.21192	16	16	M 8x1	140	20	14				✓		2
CYL 16 x 035/ER 16 MF	2616.21612	22	16	M 8x1	35	28	17				✓		4
CYL 3/4" x 115/ER 11 MF	2619.21173	16	19.05	M 8x1	115	20	17	✓					1
CYL 3/4"x 038/ER 16 MF	2619.21613	22	19.05	M12x1	38	28	17	✓					2
CYL 3/4"x 050/ER 16 MF	2619.21623	22	19.05	M12x1	50	28	17	✓					2
CYL 3/4"x 070/ER 16 MF	2619.21643	22	19.05	M12x1	70	28	17	✓					2
CYL 3/4"x 120/ER 16 MF	2619.21683	22	19.05	M12x1	120	28	17	✓					2
CYL 3/4"x 140/ER 16 MF	2619.21693	22	19.05	M12x1	140	28	17	✓					2
CYL 20 x 050/ER 16 MF	2620.21622	22	20	M12x1	50	28	17	✓	✓				2
CYL 20 x 070/ER 16 MF	2620.21642	22	20	M12x1	70	28	17	✓	✓				2
CYL 20 x 120/ER 16 MF	2620.21682	22	20	M12x1	120	28	17	✓					2
CYL 20 x 140/ER 16 MF	2620.21692	22	20	M12x1	140	28	17	✓	✓				2
CYL 22 x 038/ER 16 MF	2622.21612	22	22	M12x1	38	28	19				✓		2
CYL 22 x 070/ER 16 MF	2622.21642	22	22	M12x1	70	28	19				✓		2
CYL 22 x 100/ER 16 MF	2622.21662	22	22	M12x1	100	28	19				✓		2
CYL 22 x 080/ER 20 MF	2622.22052	28	22	M12x1	80	39	21				✓		4
CYL 22 x 070/ER 25 MF	2622.22542	35	22	M12x1	70	47	27				✓		4
CYL 25 x 065/ER 16 MF	2625.21642	22	25	M12x1	65	28	22						3
CYL 25 x 100/ER 20 MF	2625.22062	28	25	M14x1	100	28	22					✓	3
CYL 25 x 154/ER 20 MF	2625.22002	28	25	M14x1	154	28	22					✓	3
CYL 25 x 075/ER 25 MF	2625.22552	35	25	M14x1	75	47	27		✓				5
CYL 25 x 145/ER 25 MF	2625.22592	35	25	M14x1	145	36	27		✓			✓	5
CYL 1"x 065/ER 16 MF	2625.21643	22	25.4	M12x1	65	28	22		✓				2
CYL 1"x 075/ER 16 MF	2625.21653	22	25.4	M12x1	75	28	22	✓					2
CYL 1"x 100/ER 16 MF	2625.21663	22	25.4	M12x1	100	28	22	✓					2
CYL 1"x 100/ER 20 MF	2625.22063	28	25.4	M14x1	100	28	22	✓	✓				2
CYL 1"x 140/ER 20 MF	2625.22093	28	25.4	M14x1	140	28	22	✓					2
CYL 32 x 070/ER 25 MF	2632.22542	35	32	M18x1	70	30	27			✓			2



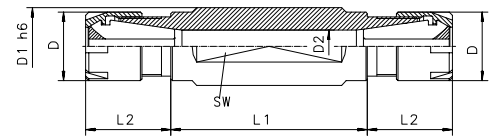
Supplied with: Colleholder, clamping nut and back-up screw



CYD/ER MF

COLLETHOLDERS

Type	Part No.	D [mm]	D1 h6 [mm]	D2 [mm]	L1 [mm]	L2 [mm]	SW [mm]	For Citizen	For Manurhin	For Star
CYD 5/8" x 015/ER 8 MF	2616.20805	12	15.875	5.2	15	15	14	✓		
CYD 5/8" x 025/ER 8 MF	2616.20895	12	15.875	5.2	25	15	14	✓		
CYD 16 x 050/ER 11 MF	2616.21124	16	16	7.5	50	20	14		✓	
CYD 3/4" x 040/ER 11 MF	2619.21143	16	19.05	7.5	40	20	17	✓		
CYD 3/4" x 070/ER 11 MF	2619.21145	16	19.05	7.5	70	20	17	✓		
CYD 3/4" x 090/ER 11 MF	2619.21165	16	19.05	7.5	90	20	19	✓		
CYD 3/4" x 055/ER 16 MF	2619.21635	22	19.05	10.5	55	26	17	✓		
CYD 20 x 030/ER 11 MF	2620.21114	16	20	7.5	30	20	17	✓		
CYD 20 x 050/ER 11 MF	2620.21124	16	20	7.5	50	20	17	✓		
CYD 20 x 055/ER 16 MF	2620.21634	22	20	10.5	55	26	17	✓		
CYD 22 x 055/ER 16 MF	2622.21634	22	22	10.5	55	28	19			✓
CYD 22 x 075/ER 16 MF	2622.21654	22	22	10.5	75	28	19			✓
CYD 25 x 062/ER 16 MF	2625.21634	22	25	10.5	62	28	22		✓	
CYD 1" x 062/ER 16 MF	2625.21635	22	25.4	10.5	62	28	22		✓	
CYD 32 x 055/ER 20 MF	2632.22034	28	32	13.5	55	28	27			✓
CYD 32 x 075/ER 20 MF	2632.22054	28	32	13.5	75	28	27			✓



Supplied with: Colletholder and two clamping nuts



CYL/ER NC

■ COLLETHOLDERS

Type	Part No.	D [mm]	D1 h6 [mm]	G	L1 [mm]	L2 [mm]	SW [mm]	Drawing
CYL 32 x 060/ER 25 NC	2632.12532	42	32	M18x1.5	60	32	-	2
CYL 32 x 060/ER 32 NC	2632.13232	50	32	M22x1.5	60	38	-	1
CYL 40 x 080/ER 32 NC	2640.13252	50	40	M22x1.5	80	33	36	2
CYL 40 x 075/ER 40 NC	2640.14052	63	40	M22x1.5	75	55	44	1

Supplied with: Colletholder, clamping nut and back-up screw

