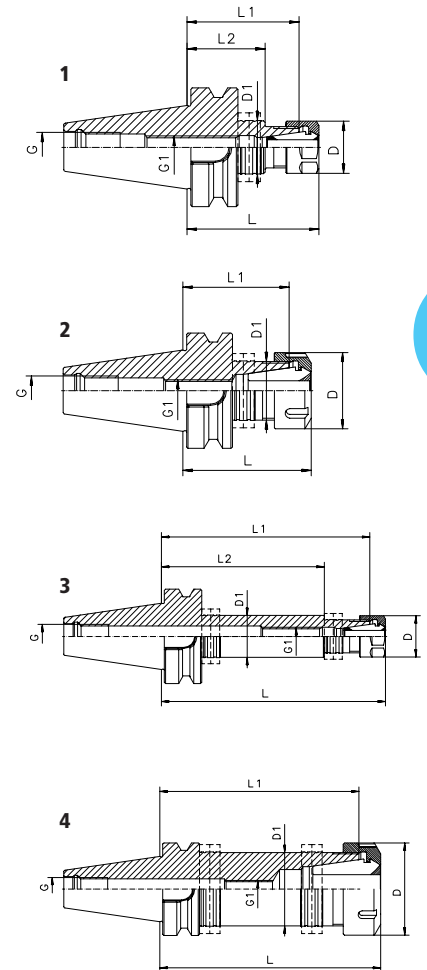




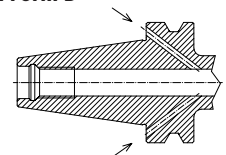
BT/ER
MAS 403

■ COLLETHOLDERS

Type	Form A+AD Part No.	D [mm]	D1 [mm]	G	G1	L [mm]	L1 [mm]	L2 [mm]	Drawing	Balancing Rings Plane 1 Plane 2
BT 30/ER 16 x 080 H	4130.11640	28	28	M12	M12	80	69.5	51.5	1	FRW 285
BT 30/ER 16 x 100 H	4130.11650	28	28	M12	M12	100	89.5	71.5	1	FWR 285
BT 30/ER 25 x 060 H	4130.12520	42	32	M12	M12	62.5	50.4	-	2	FWR 325
BT 30/ER 25 x 100 H	4130.12550	42	32	M12	M12	100	88.5	-	2	FWR 325
BT 30/ER 32 x 060	2130.13220	50	40	M12	M12	60	47.3	-	2	-
BT 30/ER 32 x 100	2130.13250	50	46	M12	M12	100	87.3	-	2	-
BT 40/ER 16 x 070 H	4140.11630	28	28	M16	M12	70	59.5	41.5	1	FWR 285
BT 40/ER 16 x 100 H	4140.11650	28	28	M16	M12	100	89.5	71.5	1	FWR 285
BT 40/ER 16 x 150 H	4140.11670	28	28	M16	M12	150	139.5	109	3	FWR 285 FWR 225
BT 40/ER 25 x 070 H	4140.12530	42	32	M16	M12	70	58.0	-	2	FWR 325
BT 40/ER 25 x 100 H	4140.12550	42	40	M16	M12	100	88.0	68.0	1	FWR 405
BT 40/ER 25 x 150 H	4140.12570	42	40	M16	M12	150	138.0	105.5	3	FWR 405 FWR 325
BT 40/ER 32 x 070 H	4140.13230	50	40	M16	M12	70	57.0	-	2	FWR 405
BT 40/ER 32 x 100 H	4140.13250	50	40	M16	M12	100	87.0	-	2	FWR 405
BT 40/ER 32 x 150 H	4140.13270	50	40	M16	M12	150	137.0	-	4	FWR 405 FWR 405
BT 40/ER 40 x 080	2140.14040	63	50	M16	M12	80	65.5	-	2	-
BT 40/ER 40 x 100 H	4140.14050	63	50	M16	M12	100	85.5	-	2	FWR 505
BT 40/ER 40 x 150 H	4140.14070	63	50	M16	M12	150	135.5	-	4	FWR 505 FWR 505
BT 50/ER 16 x 100	2150.11650	28	28	M24	M12	100	89.5	71.5	1	-
BT 50/ER 16 x 150 H	4150.11670	28	28	M24	M12	150	139.5	105.0	3	FWR 505 FWR 225
BT 50/ER 32 x 100	2150.13250	50	50	M24	M12	100	87.5	65.5	1	-
BT 50/ER 32 x 160	2150.13280	50	50	M24	M12	160	147.5	125.5	1	-
BT 50/ER 40 x 100	2150.14050	63	63	M24	M12	100	85.5	63.5	1	-
BT 50/ER 40 x 160	2150.14080	63	50	M24	M12	160	145.5	-	2	-
BT 50/ER 50 x 100	2150.15050	78	64	M24	M12	100	79.5	-	2	-



Option Form B



Cooling through the flange

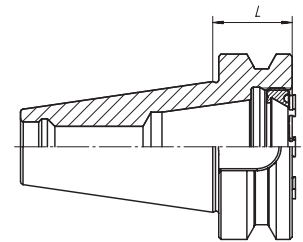
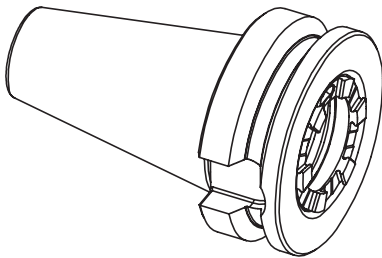


Swiss
Precision
Tools

ER

Zero-Z Collet Holders

BT | ERA
DIN 69871



Zero-Z Collet Holders

Appropriately named for its machining capabilities, the flexible ERA Zero-Z features an incredibly short projection, allowing for more z-axis stroke and greater work piece size.

Ideal for multiplex turning machines and small vertical machining centers, the ERA Zero-Z collet holder offers improved surface finish, unsurpassed accuracy and complete tool rigidity. The toolholder's unique design features a flush collet nut, whereby tool overhang is virtually eliminated. Like all REGO-FIX toolholders, the ERA Zero-Z collet holder is pre-balanced to G 2.5 at 22 000 rpm. For added clamping force, the ERA Zero-Z comes standard with REGO-FIX'S unique AX Hi-Q clamping nut. This unique nut design allows for the highest clamping forces in the industry and unmatched safety – virtually eliminating dangerous wrench slippage.

Part. No.	Description
2130.12007	BT 30 / ERA 20 x 022 L = 22 mm
2140.13207	BT 40 / ERA 32 x 027 L = 27 mm

Supplied with: Collet holder and Hi-Q / ERAX standard clamping nut

Matching Products

ER Collets

Part. No.	Description
1120.00000	ER 20 Collet Set (12 pcs.)
1120.00001	ER 20-UP Collet Set (12 pcs.)
1120.xxxx0	Individual Collets ER 20 / Ø 1,0 to 13,0 mm
1120.xxxx1	Individual Collets Ultra Precision ER 20 / Ø 1,0 to 13,0 mm
1132.00000	ER 32 Collet Set (18 pcs.)
1132.00001	ER 32-UP Collet Set (18 pcs.)
1132.xxxx0	Individual Collets ER 32 / Ø 1,0 to 20,0 mm
1132.xxxx1	Individual Collets Ultra Precision ER 32 / Ø 1,0 to 20,0 mm
1420.xxxxx	ER GB 20 / Individual Rigid Tap Collets from 4 to 11 mm
1432.xxxxx	ER GB 32 / Individual Rigid Tap Collets from 4 to 20 mm
1520.xxxxx	ET1 20 / Individual Axial Comp Tap Collets from 2,20 to 7 mm
1532.xxxxx	ET1 32 / Individual Axial Comp Tap Collets from 4,50 to 12,5 mm

Clamping Nuts | Sealing Disks

Part. No.	Description
3320.70000	Hi-Q / ERAXC 20 Coolant through tools version
3332.70000	Hi-Q / ERAXC 32 Coolant through tools version
3920.00000	DS/ER 20 Sealing Disks Set (20 pcs.)
3920.xxxxx	Individual DS/ER 20 Sealing Disks from 3,0 to 13,0 mm
3932.00000	DS/ER 32 Sealing Disks Set (34 pcs.)
3932.xxxxx	Individual DS/ER 32 Sealing Disks from 3,0 to 20,0 mm

Spanners

Part. No.	Description
7117.20000	E 20 AX / Spanner
7117.32000	E 32 AX / Spanner

REGO-FIX AG
4456 Tenniken, Switzerland

Tel. +41 61 976 14 66
Fax +41 61 976 14 14

rego-fix@rego-fix.ch
www.rego-fix.com

REGO-FIX®



HSK
DIN 69893

■ *HSK-COLLETHOLDERS PER DIN STD 69893*

Toolholders with HSK taper per DIN STD 69893 are used on modern CNC milling machines of the latest generation.

For coolant through tools HSK-toolholders can be equipped with a coolant tube (KSR) that ducts the coolant directly to the cutting tool, hereby avoiding coolant to enter and soil the HSK taper area.

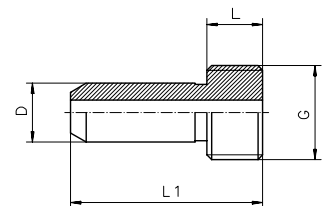
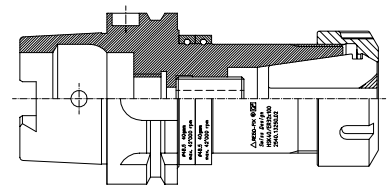
REGO-FIX® Q⁺ HSK-A toolholders are balanced by design to G 6.3 @ 15'000 min⁻¹, HSK-A 32 toolholders are balanced to G 2.5 @ 18'000 min⁻¹, HSK-E toolholders are balanced to G 2.5 @ 25'000 min⁻¹.

Type H collets are ready to accept Hi-Q balancing rings. The balancing rings allow precision balancing to 42'000 min⁻¹.

For highest precision and best results the whole system counts. For that reason all **REGO-FIX®** components (collets, clamping nuts and toolholders) are carefully matched to fit together. This guarantees lowest T.I.R. and maximum balancing. For best manufacturing results and longest tool life, please use **REGO-FIX®** toolholders together with **REGO-FIX®** collets and clamping nuts only.

For highest clamping force, as required for tapping with GB collets or ET1 collets we recommend **REGO-FIX®** friction bearing nuts. **REGO-FIX®** end mill holders and universal shell mill/face mill holders are manufactured to the same exacting standards as all other **REGO-FIX®** products.

For all HSK-A toolholders following coolant tubes (KSR) can be used:



Type	Part No.	For HSK-Type	G	D [mm]	L [mm]	L1 [mm]	Spanner	Part No.
KSR 32	7211.32000	HSK 32	M 10 x 1.0	6.0	5.5	25.7	T SKR 32	7212.32000
KSR 40	7211.40000	HSK 40	M 12 x 1.0	8.0	7.5	29.2	T SKR 40	7212.40000
KSR 50	7211.50000	HSK 50	M 16 x 1.0	10.0	9.5	32.7	T SKR 50	7212.50000
KSR 63	7211.63000	HSK 63	M 18 x 1.0	12.0	11.5	36.2	T SKR 63	7212.63000
KSR 100	7211.00000	HSK 100	M 24 x 1.0	16.0	15.5	43.6	T SKR 100	7212.00000



HSK-A/ER DIN 69893

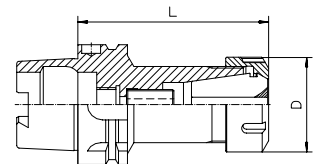
COLLETHOLDERS

Type	Part No.	D [mm]	L [mm]	Drawing	Balancing Rings Level 1 Level 2
HSKA 32/ER 11 x 050	2532.11110	19	50	1	—
HSKA 32/ER 16 x 060	2532.11620	28	60	1	—
HSKA 32/ER 20 x 060	2532.12020	34	60	1	—
HSKA 32/ER 25 x 065	2532.12520	42	65	1	—
HSKA 40/ER 16 x 080 H	4540.11640	28	80	3	FWR 225
HSKA 40/ER 25 x 080 H	4540.12540	42	80	3	FWR 325
HSKA 50/ER 16 x 100 H	4550.11650	28	100	3	FWR 325
HSKA 50/ER 25 x 080 H	4550.12540	42	80	3	FWR 325
HSKA 50/ER 32 x 100 H	4550.13250	50	100	3	FWR 405
HSKA 63/ER 16 x 100 H	4563.11650	28	100	3	FWR 325
HSKA 63/ER 16 x 160 H	4563.11680	28	160	4	FWR 325 FWR 225
HSKA 63/ER 25 x 080 H	4563.12540	42	80	3	FWR 325
HSKA 63/ER 32 x 100 H	4563.13250	50	100	3	FWR 405
HSKA 63/ER 40 x 120 H	4563.14060	63	120	3	FWR 505
HSKA 100/ER 32 x 100 H	4500.13250	50	100	3	FWR 405
HSKA 100/ER 40 x 120	2500.14060	63	120	2	—

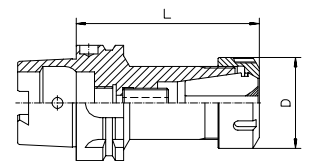
Supplied with: Colletholder, clamping nut and back-up screw

The matching coolant tubes (KSR) are on page 8-2

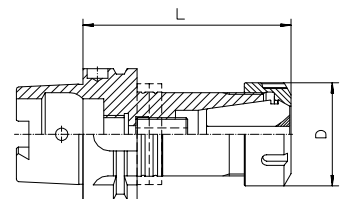
1 Without side hole



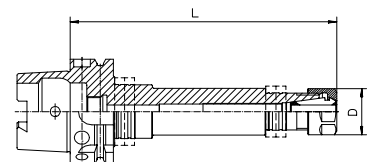
2



3



4



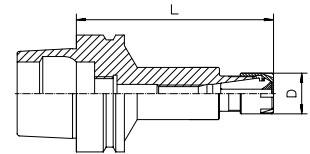


HSK-E/ER DIN 69893

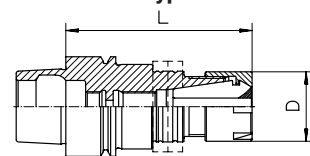
COLLETHOLDERS

Type	Form A + AD Part No.	D [mm]	L [mm]	Drawing	Balancing Plane 1
HSK-E 25/ER 16M x 043	2525.11618	22	43	1	—
HSK-E 32/ER 16M x 060	2532.11628	22	60	1	—
HSK-E 32/ER 20M x 060	2532.12028	28	60	1	—
HSK-E 40/ER 16 x 060 H	4540.11624	28	60	4	FWR 225
HSK-E 40/ER 20M x 075 H	4540.12038	28	75	2	FWR 285
HSK-E 40/ER 25M x 080 H	4540.12548	35	80	2	FWR 325
HSK-E 50/ER 16 x 100 H	4550.11654	28	100	3	FWR 325
HSK-E 50/ER 20 x 070 H	4550.12034	34	70	3	FWR 325
HSK-E 50/ER 25 x 080 H	4550.12544	42	80	3	FWR 325
HSK-E 50/ER 32 x 100 H	4550.13254	50	100	3	FWR 405
HSK-E 63/ER 32 x 090	2563.13244	50	90	3	—
HSK-E 63/ER 40 x 120	2563.14064	63	120	3	—

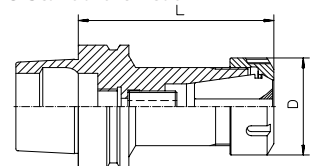
1 Mini-thread



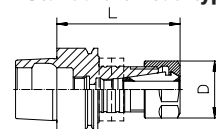
2 Mini-thread type H



3 Standard thread



4 Standard thread type H



Supplied with: Collet holder, clamping nut and back-up screw

MATCHING PRODUCTS

Collet		ER 11/ET1-12		ER 16/ET1-16		ER 20/ET1-20		ER 25/ET1-25		ER 32/ET1-32		ER 40/ET1-40		ER 50	
		Clamping Range [mm]	Page	Clamping Range [mm]	Page	Clamping Range [mm]	Page	Clamping Range [mm]	Page	Clamping Range [mm]	Page	Clamping Range [mm]	Page	Clamping Range [mm]	Page
	ER	—		0.5 ... 10.0	2-10	0.5 ... 13.0	2-12	0.5 ... 16.0	2-14	1.0 ... 20.0	2-16	2.0 ... 30.0	2-18	—	—
	ER-UP	—		0.5 ... 10.0	2-10	0.5 ... 13.0	2-12	0.5 ... 16.0	2-14	1.0 ... 20.0	2-16	2.0 ... 30.0	2-18	—	—
	ER-GB	—		4.0 ... 9.0	3-4	4.0 ... 11.2	3-4	4.0 ... 16.0	3-4	4.0 ... 20.0	3-4	6.0 ... 22.0	3-4	—	—
	ET1	—		2.0 ... 6.3	3-8	2.2 ... 7.0	3-8	2.5 ... 10.0	3-8	4.5 ... 12.5	3-8	6.0 ... 16.0	3-8	—	—

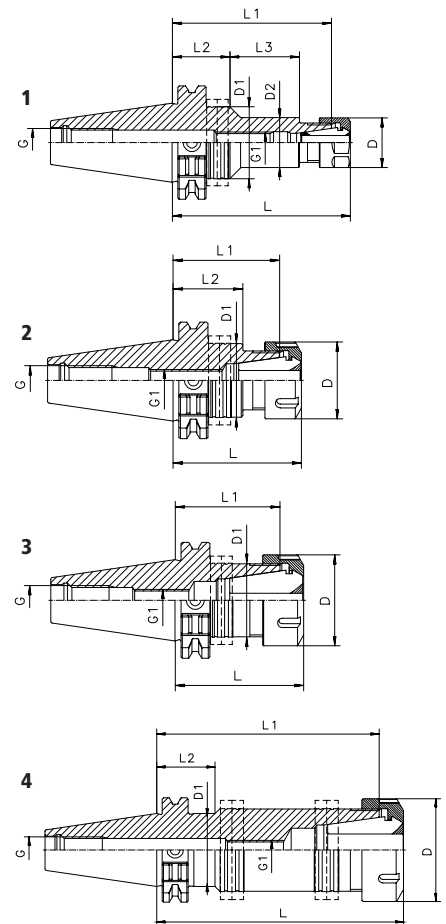


TC/ER
DIN 69871

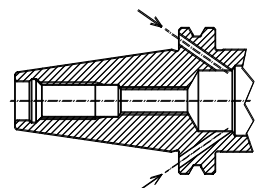
■ COLLETHOLDERS

Type	Form A+AD Part No.	D [mm]	D1 [mm]	D2 [mm]	G	G1	L [mm]	L1 [mm]	L2 [mm]	L3 [mm]	Drawing	Balancing Rings Plane 1 Plane 2
TC 30/ER 16 x 070 H	4230.11630	28	28	-	M12	M12	70	59.5	41.5	-	2	FWR 285
TC 30/ER 16 x 100 H	4230.11650	28	28	-	M12	M12	100	89.5	71.5	-	2	FWR 285
TC 30/ER 25 x 060 H	4230.12520	42	32	-	M12	M12	60	48.5	-	-	3	FWR 325
TC 30/ER 32 x 065	2230.13220	50	40	-	M12	M12	65	52.4	-	-	3	-
TC 40/ER 16 x 070 H	4240.11630	28	40	22	M16	M12	70	59.5	32.5	9.5	1	FWR 405
TC 40/ER 16 x 100 H	4240.11650	28	40	28	M16	M12	100	89.5	32.5	39.0	1	FWR 405
TC 40/ER 16 x 150 H	4240.11670	28	40	28	M16	M12	150	139.5	58.5	50.5	1	FWR 405 FWR 225
TC 40/ER 25 x 070 H	4240.12530	42	40	-	M16	M12	70	58.0	38.0	-	2	FWR 405
TC 40/ER 25 x 100 H	4240.12550	42	40	-	M16	M12	100	88.0	68.0	-	2	FWR 405
TC 40/ER 25 x 150 H	4240.12570	42	40	-	M16	M12	150	138.0	106	-	2	FWR 405 FWR 325
TC 40/ER 32 x 070 H	4240.13230	50	40	-	M16	M12	70	57.5	-	-	3	FWR 405
TC 40/ER 32 x 100 H	4240.13250	50	40	-	M16	M12	100	87.5	-	-	3	FWR 405
TC 40/ER 32 x 150 H	4240.13270	50	40	-	M16	M12	150	137.5	-	-	4	FWR 405 FWR 405
TC 40/ER 40 x 080	2240.14040	63	44.45	-	M16	M12	80	65.5	-	-	3	-
TC 40/ER 40 x 100 H	4240.14050	63	44.45	-	M16	M12	100	85.5	35.5	-	4	FWR 505
TC 40/ER 40 x 150 H	4240.14070	63	44.45	-	M16	M12	150	135.5	35.5	-	4	FWR 505 FWR 505
TC 50/ER 16 x 100	2250.11650	28	28	-	M24	M12	100	89.5	71.5	-	2	-
TC 50/ER 16 x 150	2250.11670	28	28	-	M24	M12	150	139.5	121.5	-	2	-
TC 50/ER 32 x 100 H	4250.13250	50	50.50	-	M24	M12	100	87.5	35	30.5	2	FWR 505
TC 50/ER 32 x 160	2250.13280	50	69.85	50	M24	M12	160	147.5	38.5	27.3	1	-
TC 50/ER 40 x 100 H	4250.14050	63	50.50	63	M24	M12	100	85.5	39.0	24.4	3	FWR 505
TC 50/ER 40 x 160	2250.14080	63	69.85	50	M24	M12	160	145.5	48.5	37.0	1	-
TC 50/ER 50 x 100	2250.15050	78	69.85	-	M24	M12	100	79.3	49.5	-	2	-

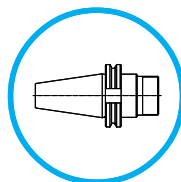
Supplied with: Colletholder and clamping nut



Option Form B

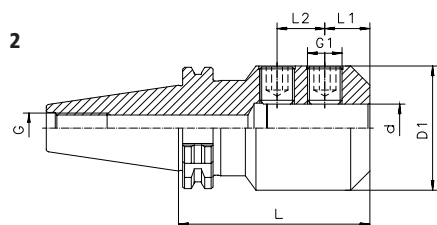
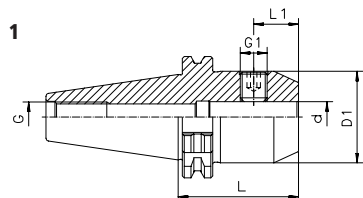


cooling through the flange



TC/WD
DIN 69871 A+AD

■ END MILL HOLDERS (WELDON)



Type	Part No.	d [mm]	D1 [mm]	G	G1	L [mm]	L1 [mm]	L2 [mm]	Drawing
TC 40/WD 6 x 050	2240.30620	6	25	M16	M 6	50	17.5	-	1
TC 40/WD 8 x 050	2240.30820	8	28	M16	M 8	50	17.5	-	1
TC 40/WD 10 x 050	2240.31020	10	35	M16	M10	50	19.5	-	1
TC 40/WD 12 x 050	2240.31220	12	42	M16	M12	50	22.0	-	1
TC 40/WD 14 x 050	2240.31420	14	44	M16	M12	50	22.0	-	1
TC 40/WD 16 x 063	2240.31630	16	48	M16	M14	63	23.5	-	1
TC 40/WD 18 x 063	2240.31830	18	50	M16	M14	63	23.5	-	1
TC 40/WD 20 x 063	2240.32030	20	52	M16	M16	63	24.5	-	1
TC 40/WD 25 x 100	2240.32560	25	65	M16	M18x2	100	23.5	25	2
TC 40/WD 32 x 100	2240.33260	32	72	M16	M20x2	100	23.5	28	2

Supplied with: End mill holder and lock screw.

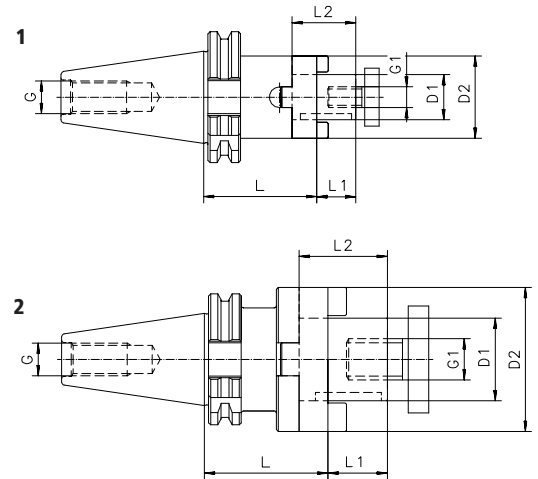


TC/KFD
DIN 69871 A

■ UNIVERSAL SHELL MILL / FACE MILL HOLDERS

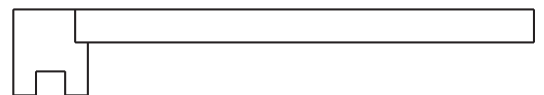
Type	Part No.	D1 [mm]	D2 [mm]	G	G1	L [mm]	L1 [mm]	L2 [mm]	Drawing
TC 40/KFD 16 x 055	2240.41630	16	32	M16	M 8	55	17	27	1
TC 40/KFD 22 x 055	2240.42230	22	40	M16	M10	55	19	31	1
TC 40/KFD 27 x 055	2240.42730	27	48	M16	M12	55	21	33	1
TC 40/KFD 32 x 060	2240.43240	32	58	M16	M16	60	24	38	1
TC 40/KFD 40 x 060	2240.44040	40	70	M16	M20	60	27	41	2

Supplied with: Universal shell mill / face mill holder, lock screw, feather key and drive ring.



■ MATCHING SPANNERS

Type	Part No.
FDS 16	7711.16000
FDS 22	7711.22000
FDS 27	7711.27000
FDS 32	7711.32000
FDS 40	7711.40000





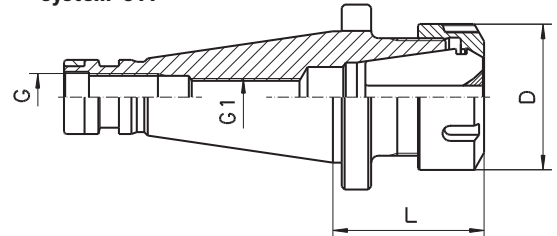
ISO/ER
DIN 2080

■ COLLETHOLDERS

Type	Part No.	D [mm]	G	G1	L [mm]	Drawing
ISO 30/ER 25 x 043	2430.12510	42	M12	M12	43	2
ISO 30/ER 32 x 050	2430.13210	50	M12	M12	50	2
ISO 40/ER 32 x 050	2440.13210	50	M16	M12	50	1
ISO 40/ER 40 x 055	2440.14010	63	M16	M12	55	1
ISO 40/ER 50 x 078	2440.15030	78	M16	M12	78	1
ISO 50/ER 40 x 058	2450.14010	63	M24	M12	58	2
ISO 50/ER 50 x 064	2450.15020	78	M24	M12	64	2

Supplied with: Colletholder and clamping nut

1 With retention groove per system OTT



2 Without retention groove per system OTT

